

An aerial photograph of a large-scale construction project. A concrete bridge or overpass structure is visible in the upper half of the image, supported by several pillars. Below the bridge, a wide dirt road or access path runs diagonally across the frame. The surrounding area is a mix of cleared land and some vegetation. The overall image has a dark, slightly desaturated color palette.

LIMAP SERVICES

AGENDA

LIMAP SERVICES



LIMAP



BENEFITS



WHAT WE OFFER



CONTACT



ROAD SERVICES



”

“ANY IDIOT CAN RUN
BUT IT TAKES A **SPECIAL KIND**
OF IDIOT TO RUN A
MARATHON”

DEILES RUNNING
(AUTHOR)



LIMAP

DIGITAL SERVICES



LIMAP

ABOUT US

2016

ESTABLISHED

START-UP in 2016

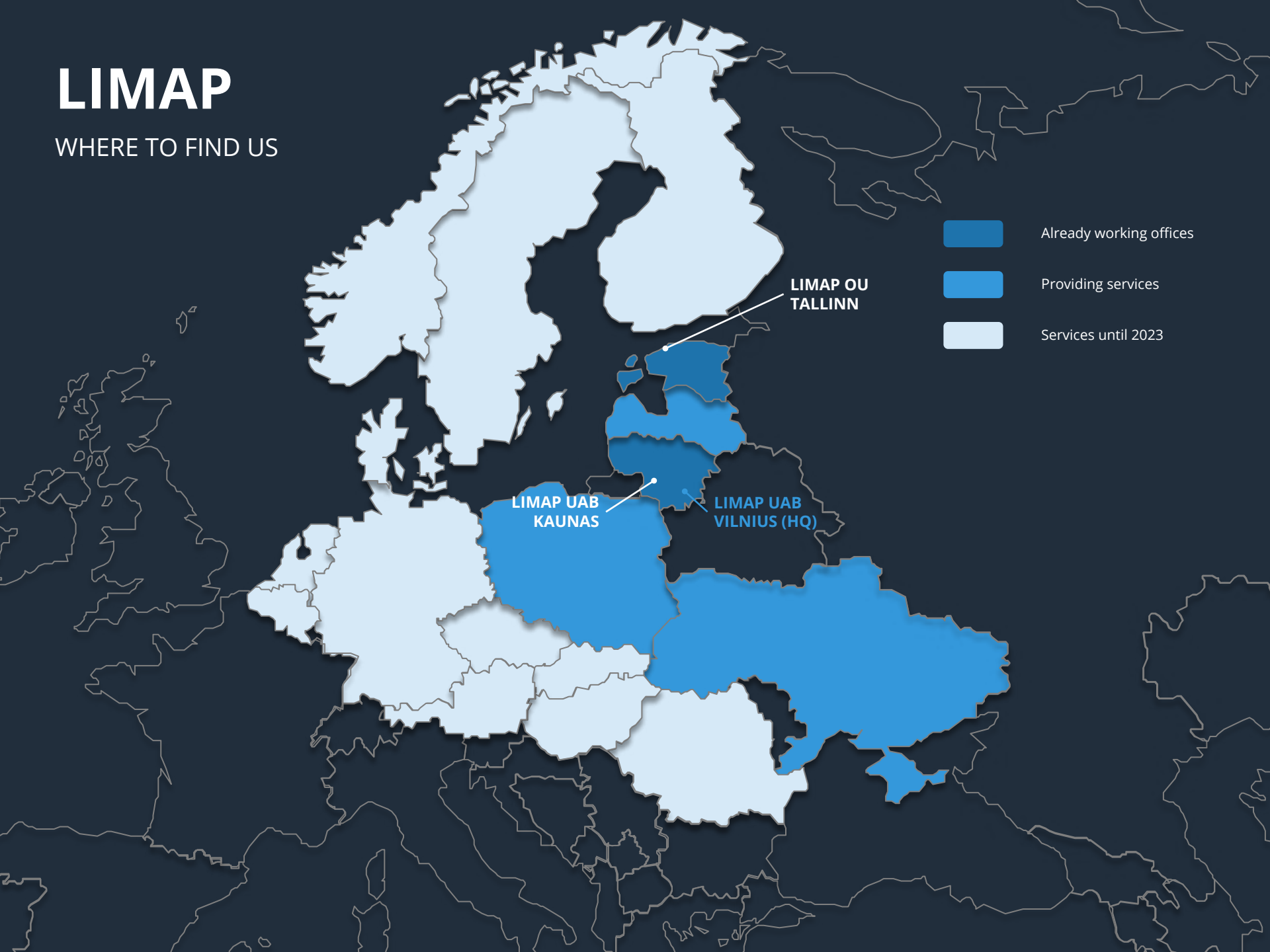
LiMAP, UAB was founded in 2016 as a technology startup. It attracted investment of 0.5 mln EUR and started making services in surveying business.

Corporate Offices: 3

Number of Employees: 23

Certificates: ISO 9001

WHERE TO FIND US



LIMAP

AN OVERVIEW



23

EMPLOYEES



20

SERVICES



3

OFFICES



5

COUNTRIES



1

MAPPING SYSTEM



95

CUSTOMERS



+30% / Y
IN SALES (LAST 3Y)



+70% GROW
IN PROFITS (FY 2020)

LiMAP

Products for clients needs

Creating online tools for point cloud and spherical images navigation.

IT

Data and hardware

New macros development for best data usage. MLS unit improvement.

**PRODUCT
DEVELOPMENT**

Employes

Big experience in various LIDAR, GIS, engineering, high precision surveying projects.

KNOW HOW

Field of engineering, public

Road constructors, road designers, architects, electrical engineers, waste, water, roads management, municipalities.

Clients

LiMAP

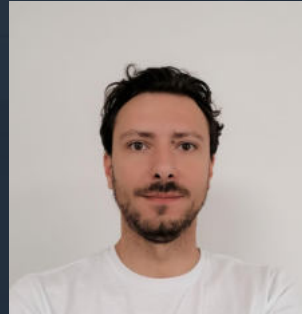
OUR COMPANY

OUR TEAM



ANDRIUS APONAS

Co-founder and CEO.
Responsible for company
development.



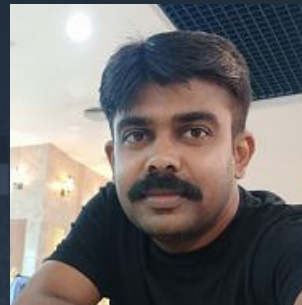
ARMINAS MACIULIS

Co-founder and CCO.
Responsible for sales and
hardware development.



GIEDRIUS SINKEVICIUS

CIO. Responsible for IT
development and data
management.



BINO ASIR S

CTO. Responsible for
vectorization and modeling
process.



WHAT WE OFFER

GEO SERVICES

WHAT WE OFFER

BEST IN

LIDAR
SCANNING

ROADS
INVESTIGATION

SMART
SOLUTIONS

TERRAIN
ANALYSIS

RAILWAY
SOLUTIONS

CITY ASSETS
GIS GATHERING

GEO PROJECTS
MANAGEMENT

...



**WE
SPECIALIZE
IN**

WHAT WE OFFER

OUR RANGE OF SERVICES

ROAD SCANNING

TOPOGRAPHICAL
2D/3D PLANS

AS-BUILT

LEVELING

RAILWAY SCANNING

GIS DATA

**DETAILED ROAD
SURFACE**

TOTAL SCANNING

AIRBORNE
SCANNING

ORTHOPHOTO &
OBLIQUE

IT GIS SOLUTIONS

WHAT WE OFFER

ROAD SERVICES

BEFORE TENDER



HELPS EVALUATE MATERIALS

BEFORE CONSTRUCTION



HELPS PLAN
CONSTRUCTION IN DETAIL

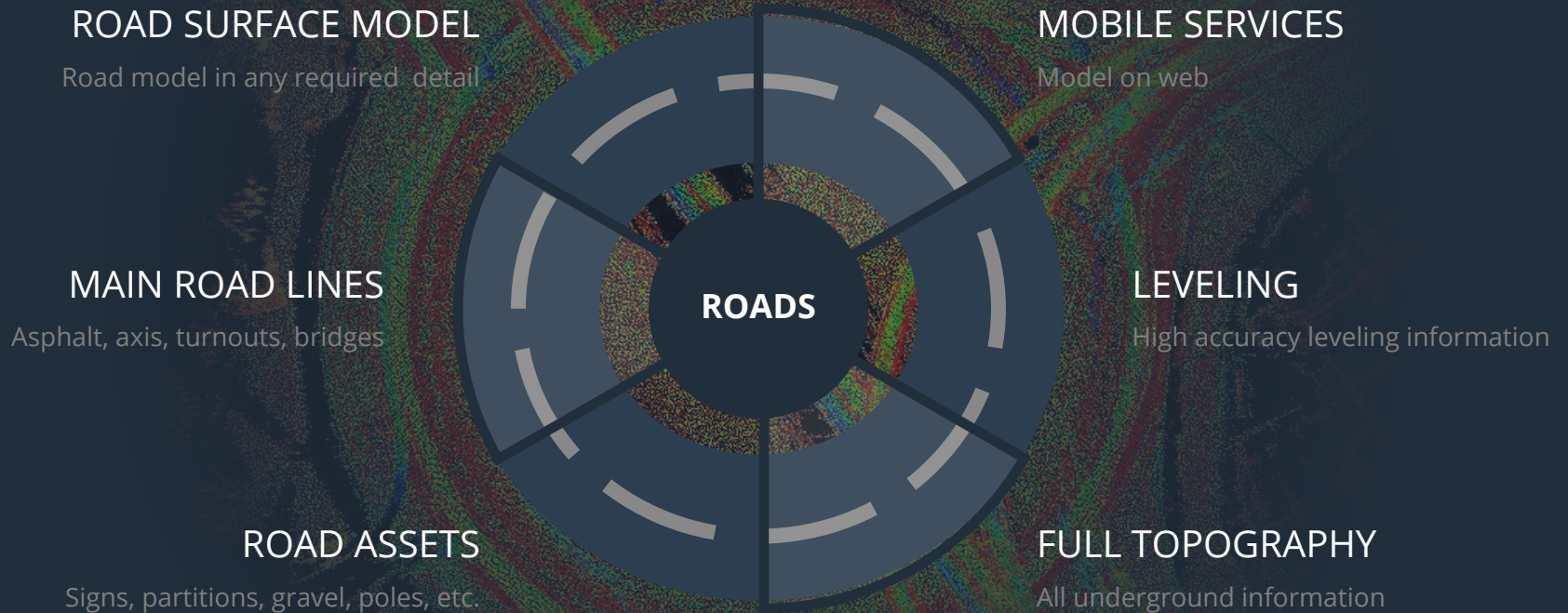
DURING CONSTRUCTION



CONTROL OF DESIGN
PROJECT AND MATERIALS

WHAT WE OFFER

DETAILED ROAD SURFACE



The background of the slide is a photograph of a road at night, viewed from an elevated perspective. The road is illuminated by streetlights, and there are several colorful, glowing light trails in shades of red, green, and blue that curve along the road's path, suggesting motion or data flow. The overall scene is somewhat hazy and atmospheric.

ROAD SERVICES

ROAD SURFACE MODEL

Detail representation of asphalt surface in CAD.

ANY REQUIRED **DETAIL**
OF ROAD SURFACE
REPRESENTATION

ALL SMALLEST
DETAILS TO MEET
ACCURACY

MAIN ROAD LINES

Asphalt, axis, turnouts, curbs, bridges joints

RELIABLE ROAD EDGES
GIVES ACCURATE AREA
FOR A MATERIAL
CALCULATIONS

LET DESIGN BE
ACCURATE

ROAD ASSETS

An aerial photograph of a road construction site. The image is dark with a blue tint. Various road assets are highlighted in red, including light poles, partitions, wells, curbs, and other infrastructure elements. The background shows a road under construction with some vehicles and trees in the distance.

Light poles, partitions, wells, curbs and all other road assets.

WE WORK TOGETHER
TO CREATE **DIGITAL**
ROAD ASSETS FOR
YOU

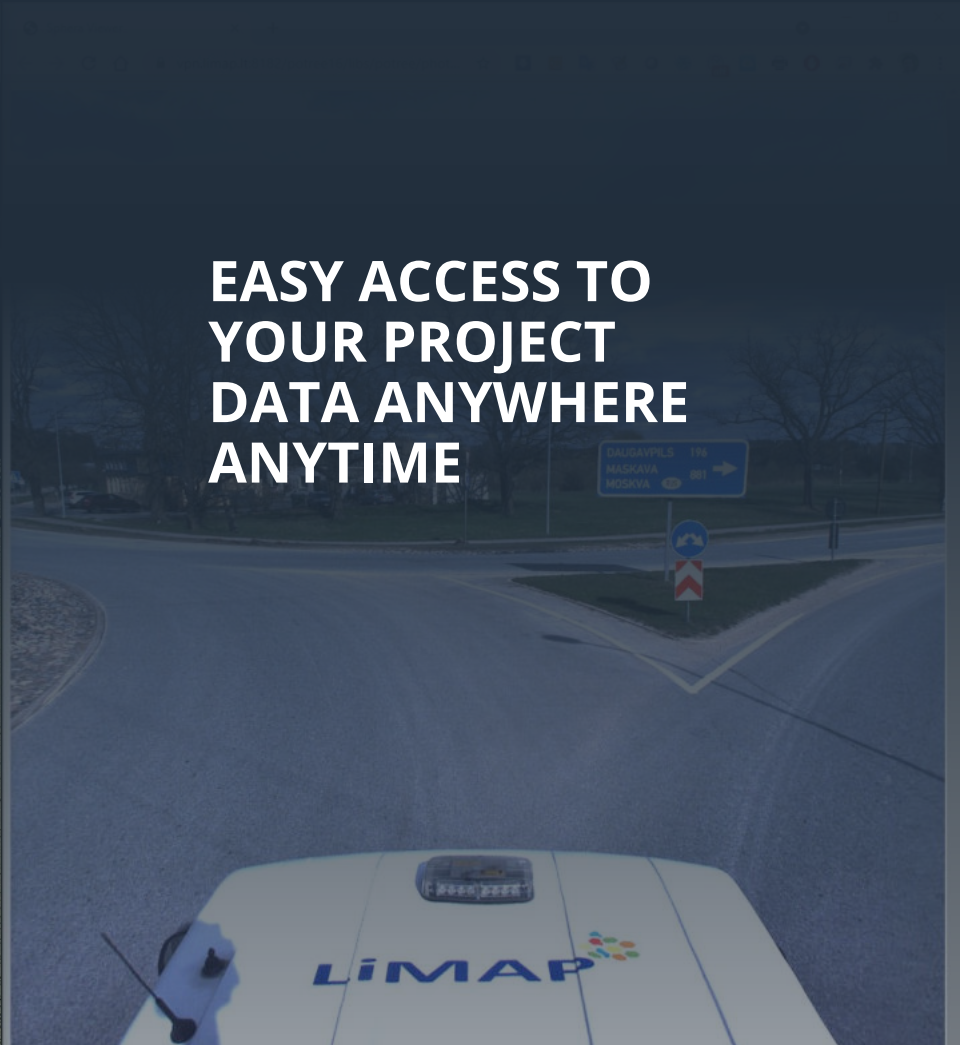
ROAD
INFRASTRUCTURE
REPRESENTED IN
DRAWINGS

MOBILE SERVICES

Point cloud, vectors, spherical images, 3D models on a web browser



**INVESTIGATE SITE
WITHOUT LEAVING
YOUR OFFICE**



**EASY ACCESS TO
YOUR PROJECT
DATA ANYWHERE
ANYTIME**

LEVELING

Geodetic network, benchmarks, different class leveling

**HIGH ACCURACY
LEVELING GIVES THE
BEST RESULTS IN
DESIGN**

**AUTHORIZED
SOFTWARE FOR
LEVELING TRAVERSE
ADJUSTMENT**

FULL TOPOGRAPHY



Topographical plans in 2D & 3D, underground utilities, any scale

**FULL AREA
INVESTIGATION AT
ANY REQUIRED LEVEL**

**APPROVED BY
MUNICIPALITY AND
UTILITY OWNERS**

BEFORE TENDER

DIGITAL SERVICES

BEFORE TENDER

All information to evaluate road construction price



**FULL ROAD
INVESTIGATION WITH
ALL DETAILS ABOUT
IT**

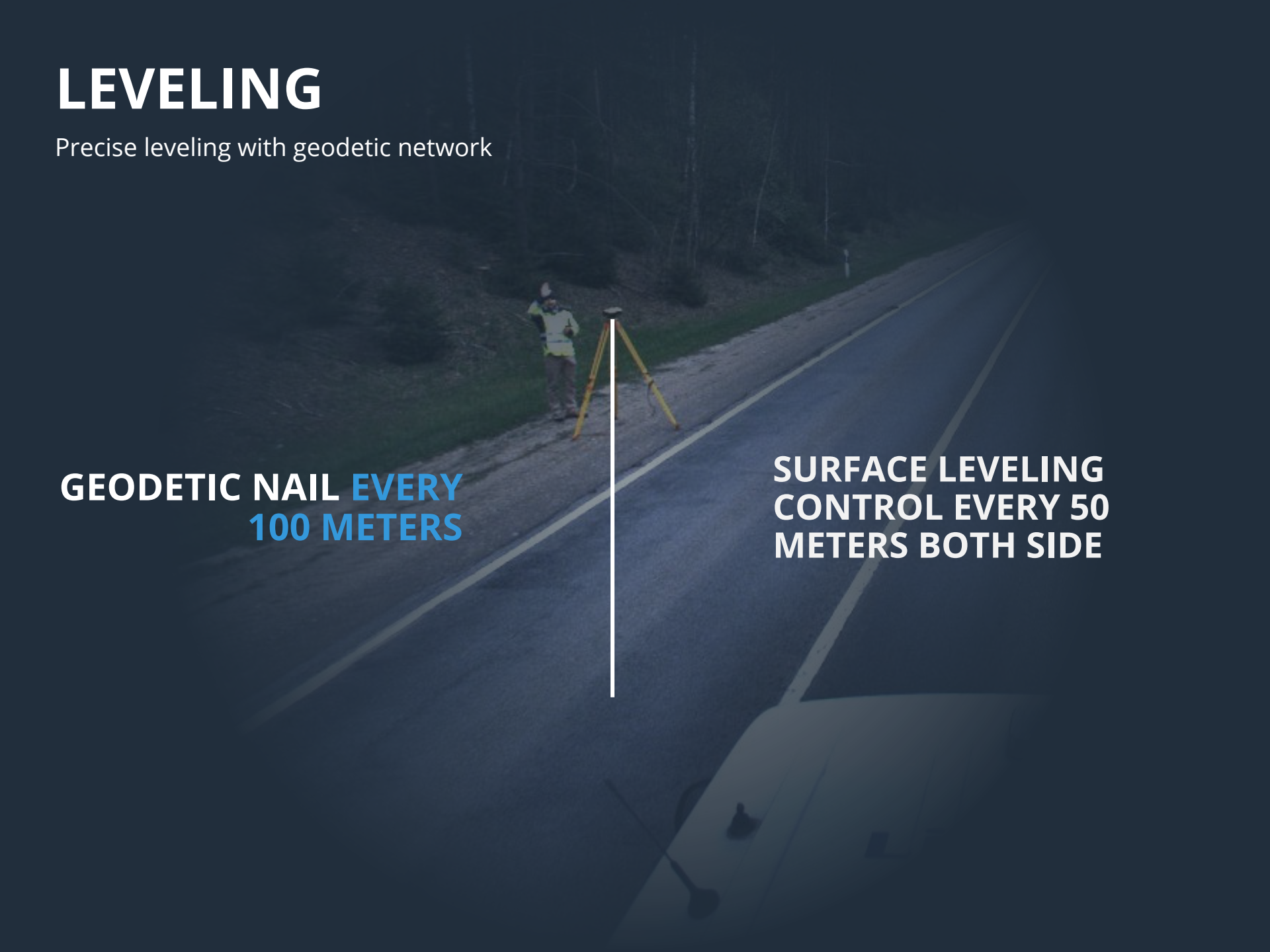
**QUANTITY
CALCULATIONS FOR
MATERIALS**

LEVELING

Precise leveling with geodetic network

**GEODETIC NAIL EVERY
100 METERS**

**SURFACE LEVELING
CONTROL EVERY 50
METERS BOTH SIDE**



MAIN ROAD LINES

CAD or DGN vectors where you can see asphalt limits, turnouts, axis, curbs, bridge limits, bridge joint lines, speed limiting road bumps.



**REAL ASPHALT AREA
AND DETAILED
TURNOUTS**

**GEOMETRICAL AXIS
OF ROAD, EACH
CURB**

DETAIL SURFACE

LandXML or Mesh surface which represents detailed road surface.

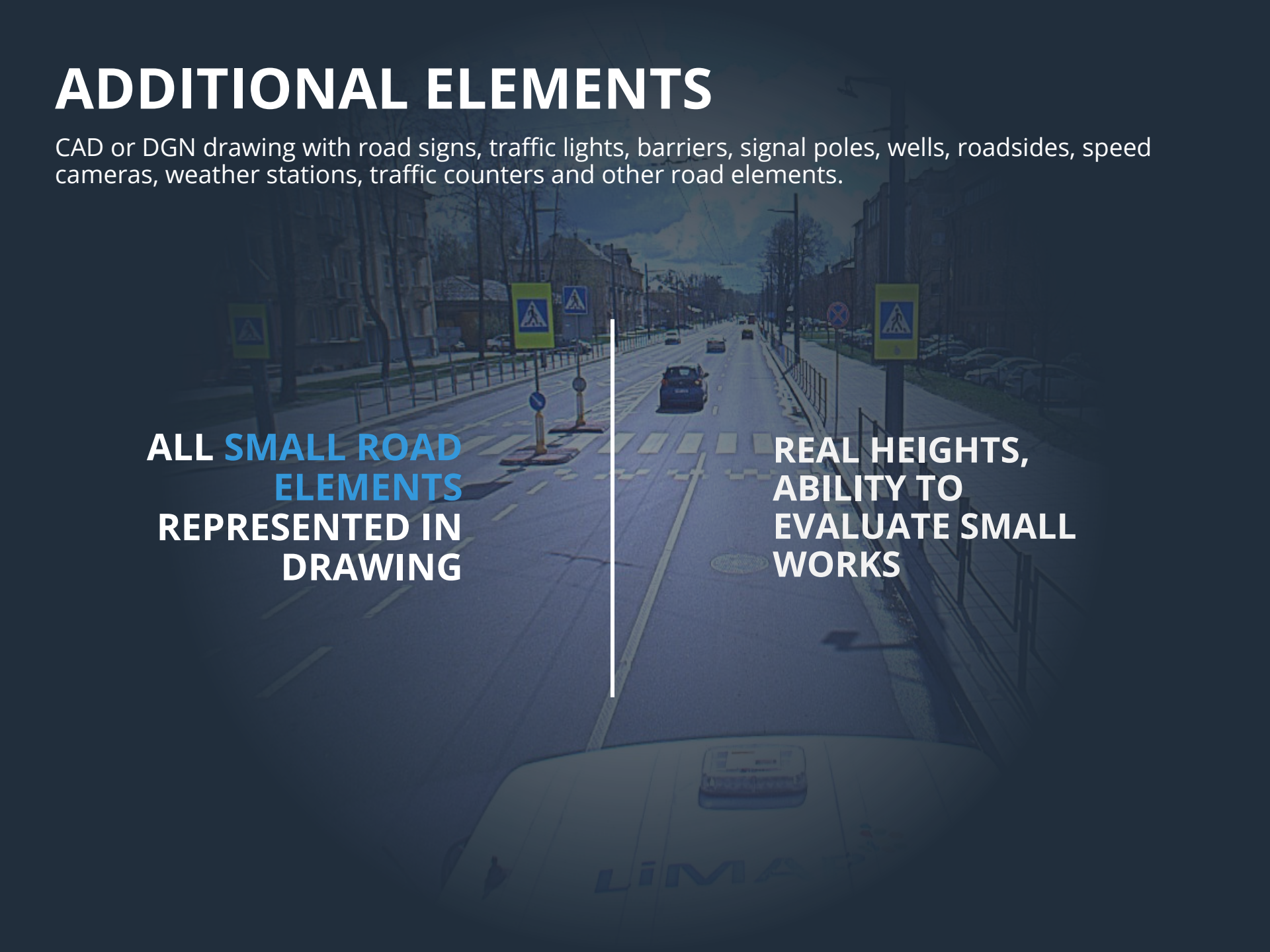


**REAL ASPHALT
SURFACE WITH MOST
REPRESENTED
PUSHED AREAS**

**CROSS SECTIONS
EACH METER.
POINTS EVERY
10 CENTIMETER**

ADDITIONAL ELEMENTS

CAD or DGN drawing with road signs, traffic lights, barriers, signal poles, wells, roadsides, speed cameras, weather stations, traffic counters and other road elements.



ALL SMALL ROAD
ELEMENTS
REPRESENTED IN
DRAWING

REAL HEIGHTS,
ABILITY TO
EVALUATE SMALL
WORKS

ROAD DAMAGES

CAD or DGN drawing with identified damages in categories: longitudinal crack, latitudinal crack, cracking network, road pits, asphalt edge cracking



**EASY TO IDENTIFY
AND CHOOSE THE
RIGHT DECISION**

**FAST CAD
CALCULATIONS.
EASY TO CHOOSE
FIXING METHOD**

ROAD ORTHOPHOTO

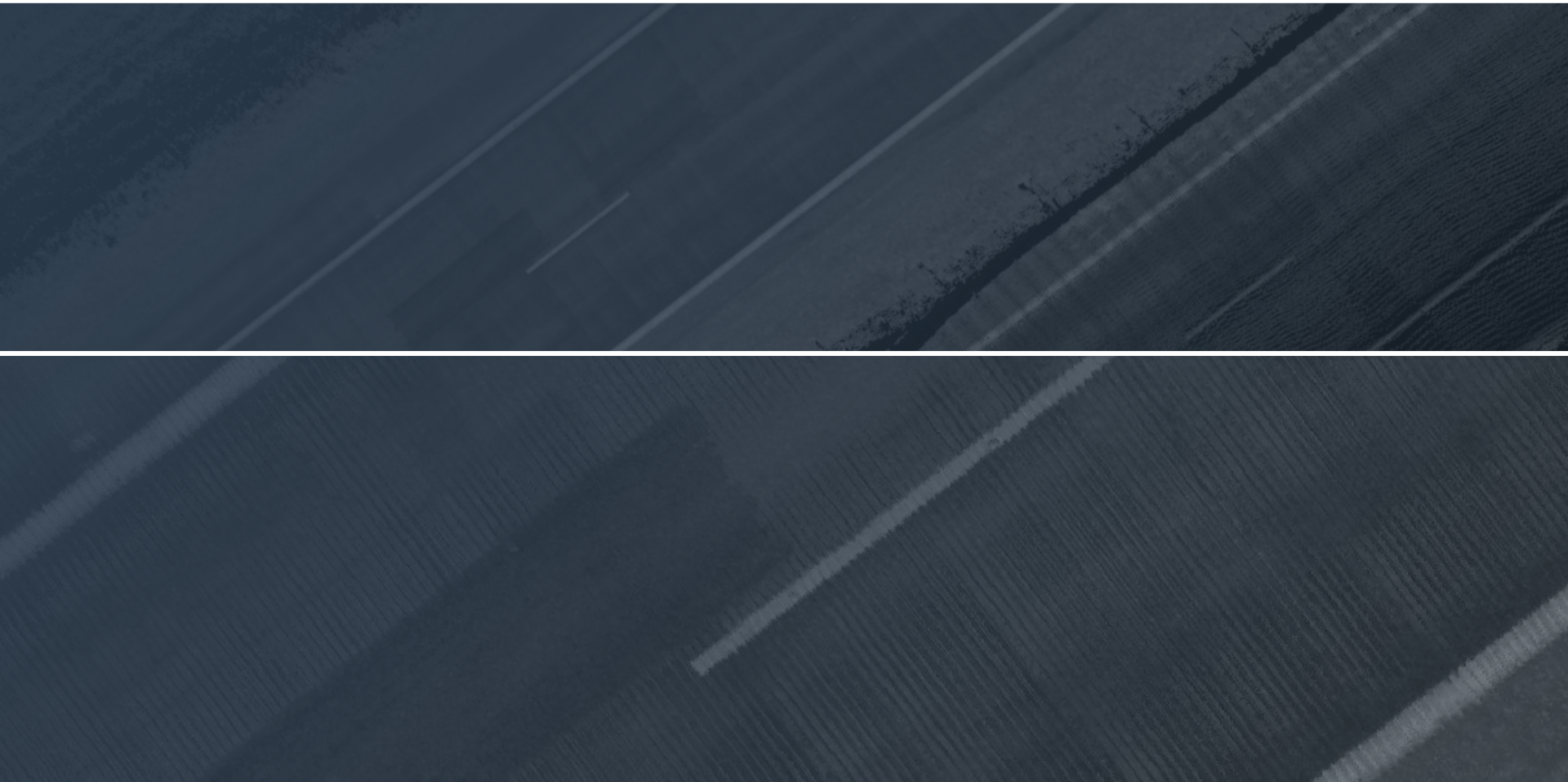
Orthophoto generated from LiDAR point cloud with 1 cm GSD or RGB orthophoto with 2-5mm GSD for detail evaluation

**REAL ROAD AND
ABILITY TO CHECK
ROAD DETAILS**

**CRACKING VISUAL
EVALUATION,
PAINT LINES
IDENTIFICATION**

ROAD ORTHOPHOTO

LIDAR GENERATED EXAMPLE



ROAD ORTHOPHOTO

RGB PHOTOGRAPHY EXAMPLE

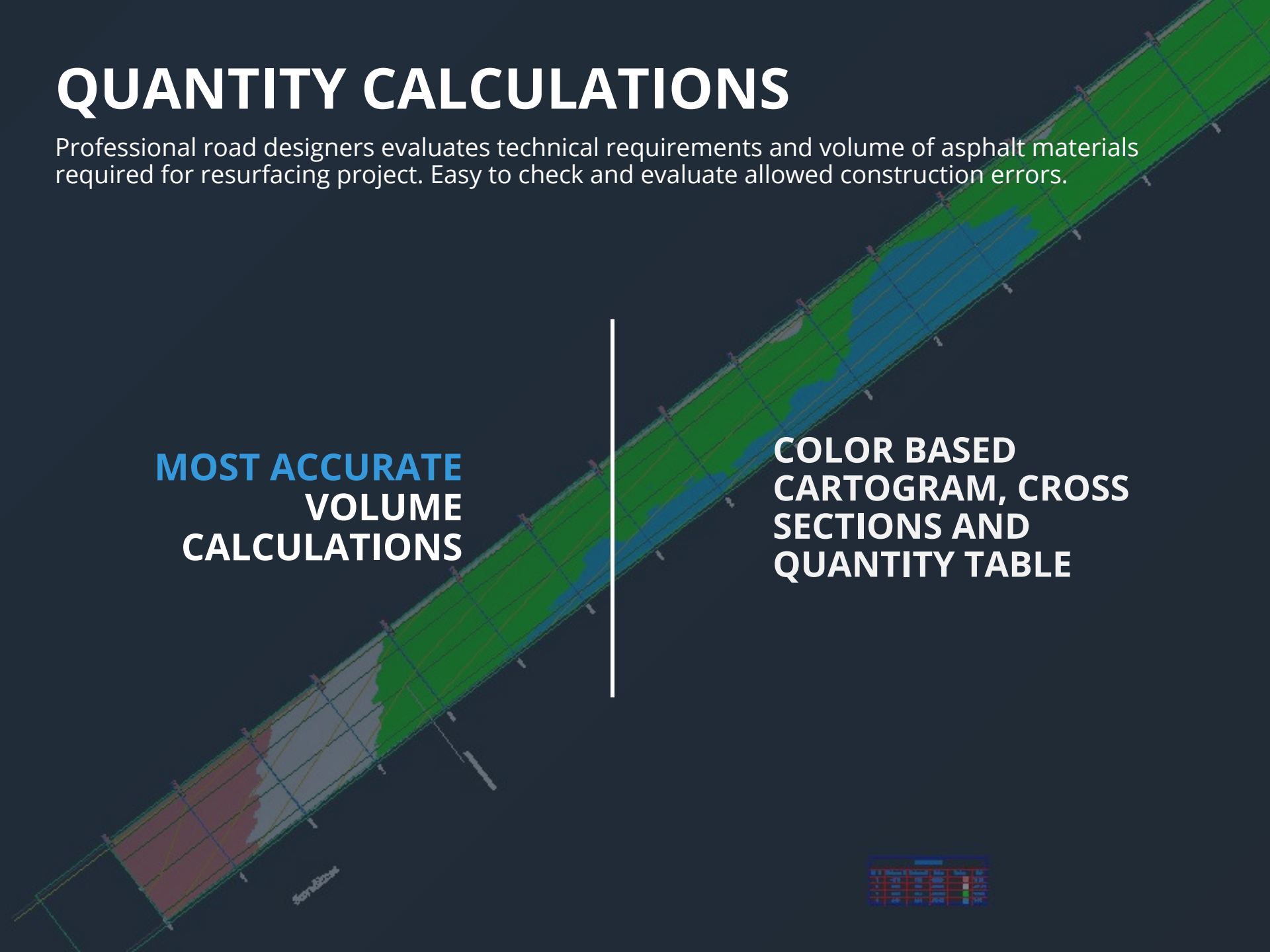


QUANTITY CALCULATIONS

Professional road designers evaluates technical requirements and volume of asphalt materials required for resurfacing project. Easy to check and evaluate allowed construction errors.

**MOST ACCURATE
VOLUME
CALCULATIONS**

**COLOR BASED
CARTOGRAM, CROSS
SECTIONS AND
QUANTITY TABLE**



ST	Distance	Volume	Area	Unit
1	0.00	100	1000	100
2	100	100	1000	100
3	200	100	1000	100
4	300	100	1000	100

BEFORE & DURING CONSTRUCTION

DIGITAL SERVICES

GEODETIC NETWORK

Geodetic nails in asphalt with staked out height outside the road as a base for construction. Allows to use 3D machinery with control in every step of construction.

**HIGH ACCURACY
BASE POINTS**

**STAKEOUT FOR 3D
MACHINERY**

DETAIL SURFACE

Surface with all CAD details of road. Allows to prepare design for asphalt milling with precise connection to existing road.

**REAL ASPHALT
SURFACE WITH MOST
REPRESENTED
PUSHED AREAS**

**CROSS SECTIONS
EACH METER.
POINTS EVERY
10 CENTIMETER**

MILLING DESIGN

Professional road designers evaluates technical requirements and volume of asphalt materials required for resurfacing project. Prepares optimal milling design surface for 3D machinery.

**OPTIMAL
MATERIAL USAGE
FOR CONSTRUCTION**

**ALL REQUIREMENTS
CONSIDERED IN
DESIGN**

CONSTRUCTION SITE PREPARATION

Before the construction of a road, piquetage stakeouts must be made, asphalt must be marked.

**HIGH ACCURACY
BASE POINTS**

**STAKEOUT FOR 3D
MACHINERY**



3D MACHINERY PROJECT

Prepared surface model for 3D milling/paving machinery.

**EFFECTIVE
CONSTRUCTION**

ASSISTANCE ON FIELD

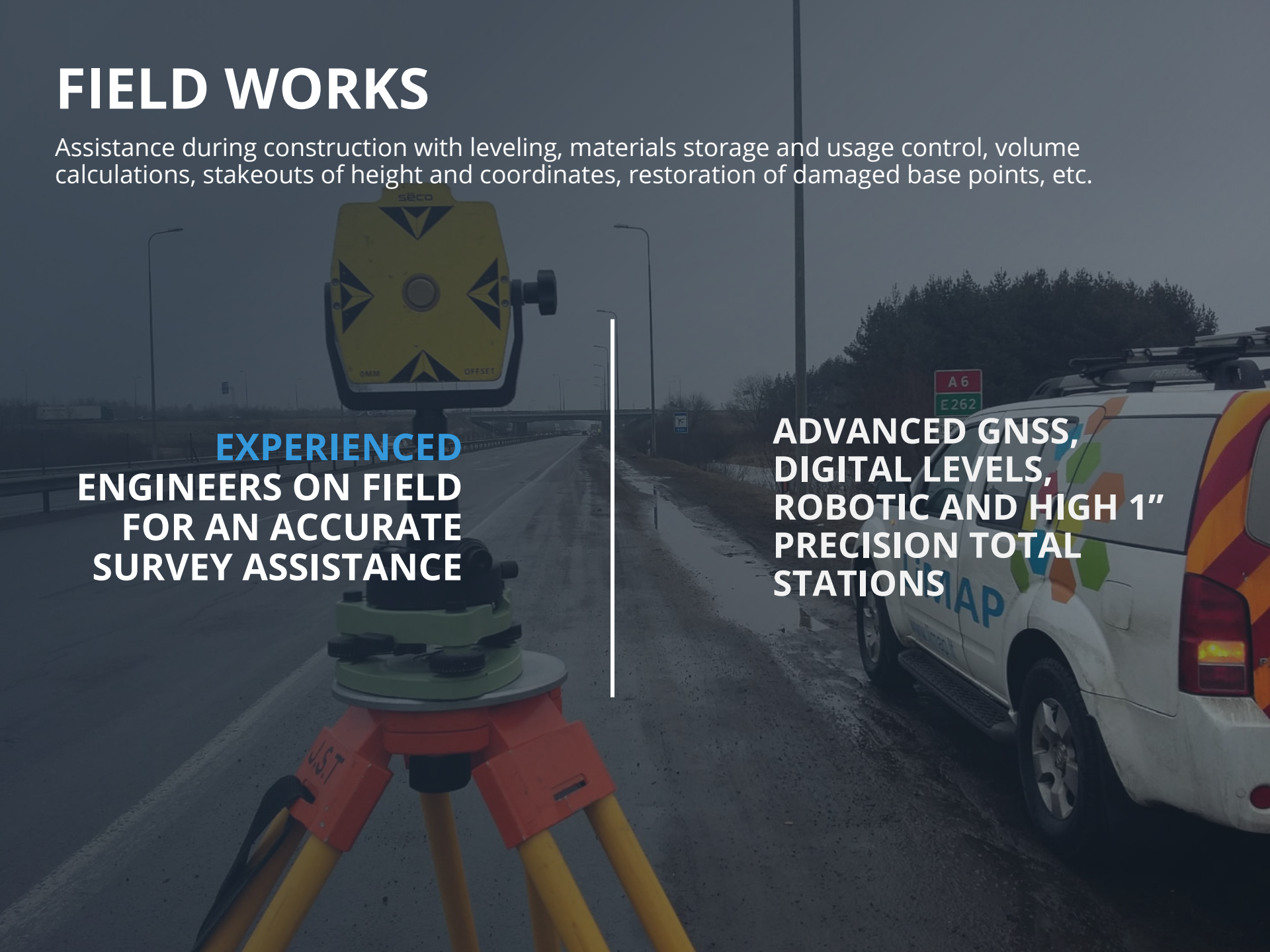


FIELD WORKS

Assistance during construction with leveling, materials storage and usage control, volume calculations, stakeouts of height and coordinates, restoration of damaged base points, etc.

**EXPERIENCED
ENGINEERS ON FIELD
FOR AN ACCURATE
SURVEY ASSISTANCE**

**ADVANCED GNSS,
DIGITAL LEVELS,
ROBOTIC AND HIGH 1"
PRECISION TOTAL
STATIONS**



AS BUILT

Detail “as-built” drawing with all required information. As-built control available during construction.



**RELIABLE
REPRESENTATION
OF FACTS**

**ALL DETAILS SCANNED
AND PHOTOGRAPHED**

ROAD REGISTRATION

Preparation of reconstructed road registration documents.

Kelio riba				
Taško Nr.	X		Y	
1	6125964,53	391365,47		
2	6125972,20	391358,42		
3	6125974,93	391361,17		
4	6125995,83	391383,06		
5	6126010,34	391398,39		
6	6126020,67	391408,97		

Projekto autorius: Ineta Aporienė

001411 33

KOORDINACIŲ ŽINIARAŠTIS

Kelio ašis			
Taško Nr.	Atskaitos taško km	X	Y
24	0,285	6125968,38	391361,93
25	0,300	6125978,29	391372,71
26	0,303	6125980,56	391375,07
27	0,306	6125982,82	391377,43
28	0,309	6125984,94	391379,44



KELIO PLANAS

M1:500



LIMAP, UAB

Tomo Nr. 1 Tomas
Registro 44/2272568

BYLOS TOMO VIDAUS APYRAŠAS

Eil. Nr.	Dokumento pavadinimas	Dokumento		Lapų skaič.	Bylos lapų numeriai	Pastabos
		Nr.	Data			
1	Statinio planas "STATINIŲ IŠDĖSTYMO PLANAS"		2020-02-14	1	1	
2	KOORDINACIŲ ŽINIARAŠTIS		2020-02-14	2	2-3	
3	KELIO/GATVĖS KADASTRO PLANAS		2020-02-14	3	4-6	
4	KELIO/GATVĖS KADASTRO PLANAS		2020-02-14	3	7-9	
5	KELIO/GATVĖS KADASTRO PLANAS		2020-02-14	1	10	
6	KELIO/GATVĖS KADASTRO PLANAS		2020-02-14	3	11-13	
7	KELIO/GATVĖS KADASTRO PLANAS		2020-02-14	3	14-16	
8	Kelionis		2020-02-14	3	17-19	

Vidaus apyrašo lapų 19

Inžinierė Ineta Aporienė

ELEKTRONINIO DOKUMENTO M. TADUC

I. Dokumento pavadinimas (antraštė) Kelio

II. Dokumento sudarytojas (-ai)

Ineta Aporienė, Vilnius, K. Donelaičio g. 6A

III. Dokumento registracijos data ir numeris

IV. Pasirašymas

Parašo paskirtis: pasirašymas
Parašą sukurio asmens vardas, pavardė
Sertifikatas išduotas: Ineta Aporienė
Parašo sukūrimo data ir laikas: 2020-02-25
Parašo formatas: XADES-BASELINE-T
Laiko žymoje nurodytas laikas: 2020-02-25 10:17:39
Informacija apie sertifikavimo paslaugų teikimą
Sertifikato galiojimo laikas 2019-01-17 13

Parašo paskirtis: suderinimas
Parašą sukurio asmens vardas, pavardė
Registru centras
Sertifikatas išduotas: Ineta Aporienė
Parašo sukūrimo data ir laikas: 2020-02-25
Parašo formatas: XADES-BASELINE-T
Laiko žymoje nurodytas laikas: 2020-02-25 10:17:39
Informacija apie sertifikavimo paslaugų teikimą: BCSG Lietuva



EASY FINISH
FOR A DIFFICULT
PROCESS

ALL DOCUMENTS
APPROVED BY ALL
REQUIRED AGENCIES

NEKILNOJAMOJO DAUGIASTRIŲ MATAV

Tomas: 1 Tomas
amojo turto objektas: Inžinerinis st
Registro Nr.: 44/2272568 (S
Adresas: Tauragės r. s.
Lapų skaičius: 20

INTA
bes įmonė Registrų centras
vartu parašu pasirašė: Janina Leik
os, Skyrinus vadovė
yau: 2020-02-25 10:17:26

BENEFITS

DIGITAL SERVICES

BENEFITS

LONG-TERM, SATISFIED CUSTOMERS



BENEFITS

10 REASONS TO USE OUR SERVICES

10 BENEFITS



01

COMMUNICATION



02

RELIABILITY



03

ADVANCED



04

TARGET FOCUSED



05

CONSULTING



06

GOOD PRICE



07

ISO 9001



08

MOBILE



09

INNOVATIVE

CONTACT

ROAD SERVICES

CONTACT

GET IN TOUCH WITH US



LiMAP, OÜ

Väike-Paala tn 2 Tallinn Harjumaa
Estonia

MOBILE: +370 612 00616
EMAIL: INFO@LIMAP.EE
WEB: WWW.LIMAP.EE



LiMAP, UAB

Sunrise valley science and technology park
Vilnius
Lithuania

MOBILE: +370 647 37535
EMAIL: INFO@LIMAP.LT
WEB: WWW.LIMAP.LT